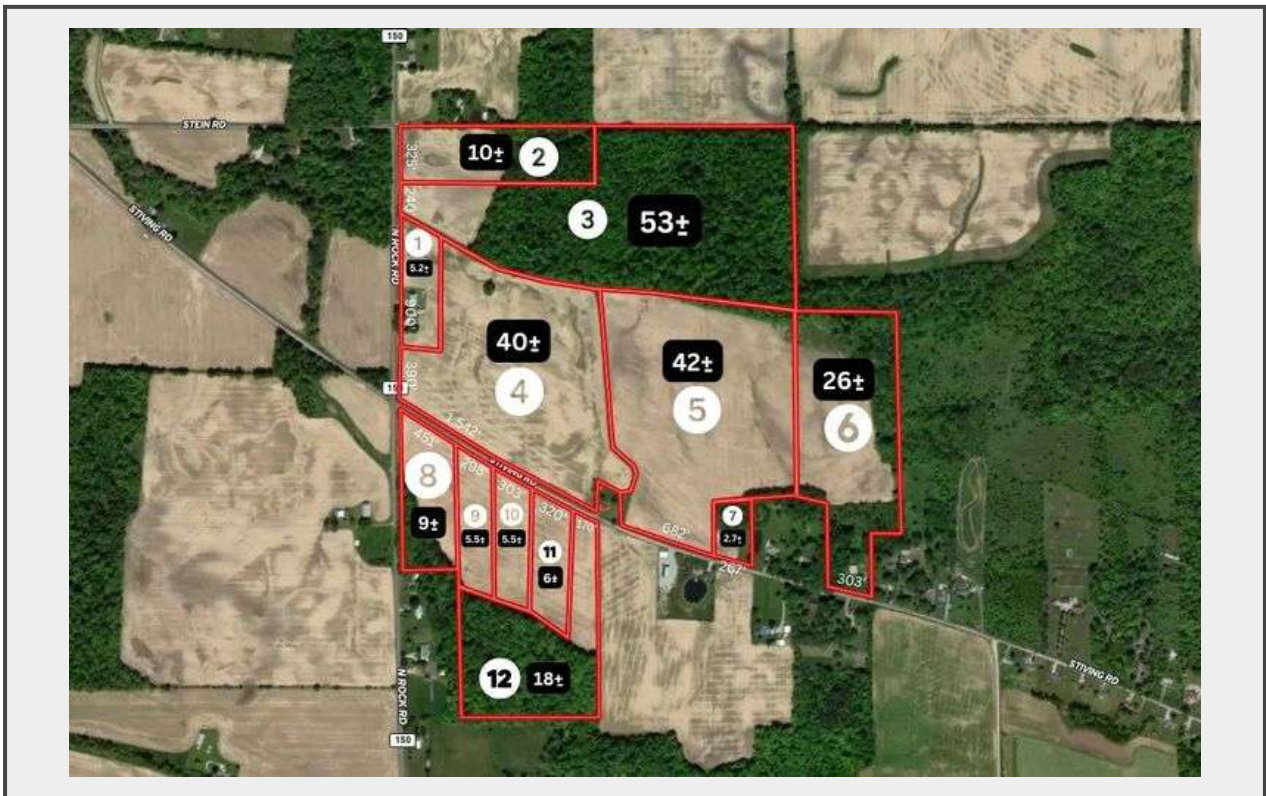


Sale Name: Absolute Richland County 223-Acre Farm Auction

LOT 1 - Parcel 1



Description

Parcel 1: A solid 2-story farmhouse on 5.2 acres, featuring 2 bedrooms and 1 full bath. While it could use some updating, the home has strong bones and classic charm—offering great potential for someone ready to make it their own.

This parcel includes multiple outbuildings: a 40x62 bank barn, 24x40 outbuilding, 16x18 detached garage, 16x22 outbuilding, and a 13x18 utility shed—perfect for hobby farming, livestock, or extra storage.

Whether you're starting a mini farm, restoring a classic farmhouse, or looking for space to spread out, this property offers a versatile and valuable opportunity.

Quantity: 1



<https://www.res.bid/>